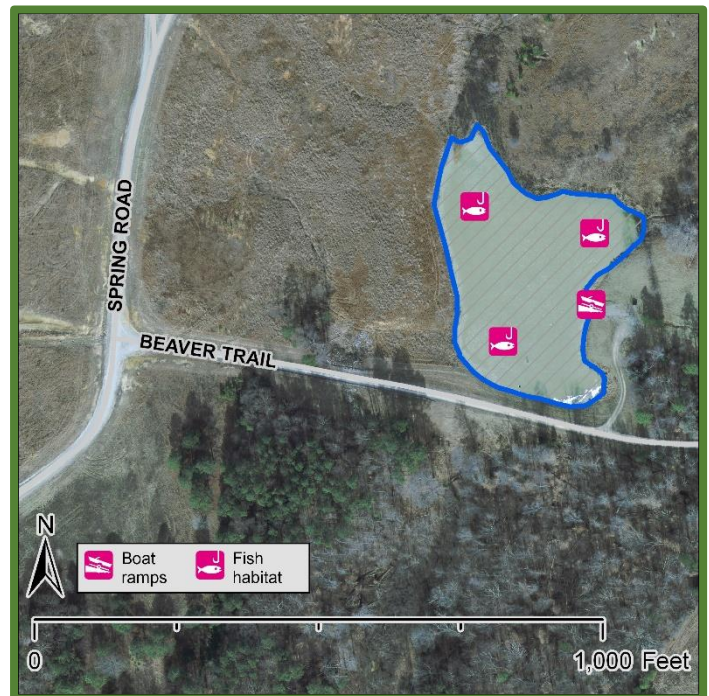
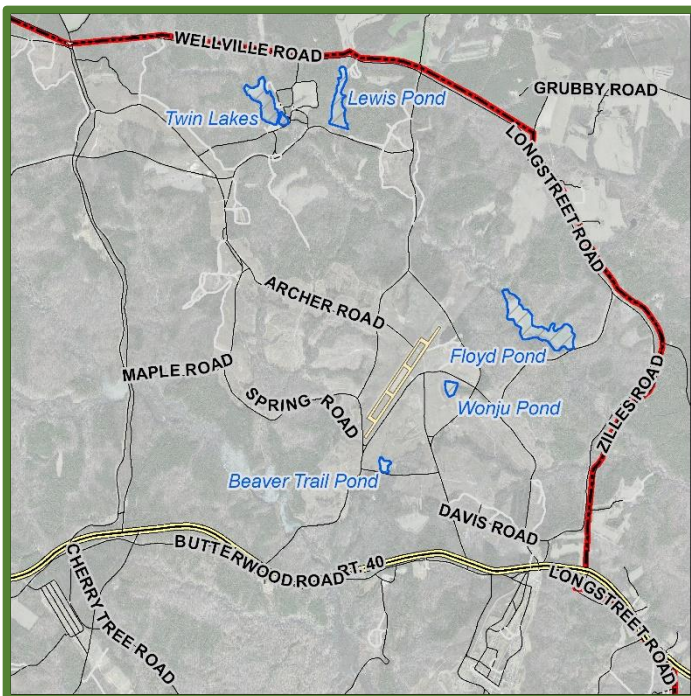


Fort Barfoot Natural Resources

Beavertrail Pond

Latitude: 37.08179746 Longitude: 77.88284809

Beavertrail Pond is a 2.4-acre impoundment located in area 13 of Ft. Barfoot. The impoundment is easily accessible and supports a multi-species fishery. There is potential for high catch rates of sunfish, largemouth bass, and channel catfish. It supports an average water depth of 4ft. with the deepest potential reaching 8-9ft. Beavertrail Pond provides good bank fishing access as well as 1 primary boat launch point. Creel limits are liberal for sunfish and largemouth bass. A riser pipe replacement in 2019 provided an opportunity to reset this fishery and establish a balanced predator/prey dynamic.



ADDRESS

Fort Barfoot Game Check Station
Dearing Ave
Blackstone, VA
23824

PHONE

Ft Barfoot Game Check Station:
434-292-2618
Ft. Barfoot Natural Resources Office:
434-292-2292

WEBSITE

<https://barfoot.isportsman.net>