

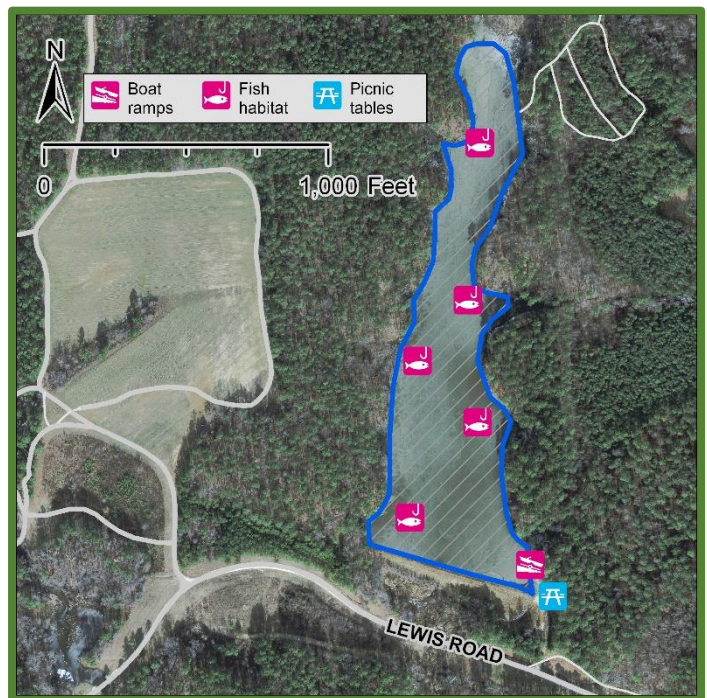
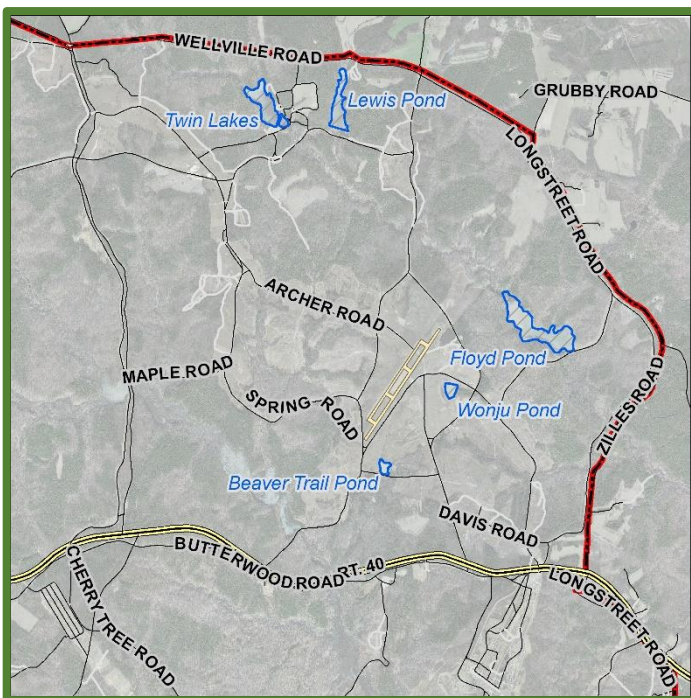
# Fort Barfoot Natural Resources

## Lewis Pond

**Latitude:37.11068012    Longitude: -77.88823387**

Lewis Pond is a 13-acre impoundment located in the north-central portion of area 14 in Ft. Barfoot and is easily accessible from Lewis Rd. This impoundment supports a strong multi-species fishery of bluegill, largemouth bass, black crappie, and channel catfish. Despite an unfortunate fish kill in 2021, the fishery has rebounded nicely, and abundant forage is translating to vigorous growth rates for largemouth bass at this time. Even with this setback, we anticipate quality and trophy size class fish within the next 1-3 years, which will turn this pond into a trophy largemouth bass producer.

The average water depth is 4.5ft. with the deepest potential reaching 8.5ft. Lewis Pond provides some bank fishing access along the dam but is best enjoyed with a personal watercraft. Nuisance aquatic vegetation (duckweed and blue green algae) can be problems during the spring and summer. We are actively working to reduce nutrient loading, remove problem aquatic weeds, and improve the overall ecosystem.



### ADDRESS

Fort Barfoot Game Check Station  
Dearing Ave  
Blackstone, VA  
23824

### PHONE

Ft Barfoot Game Check Station:  
434-292-2618  
Ft. Barfoot Natural Resources Office:  
434-292-2292

### WEBSITE

<https://barfoot.isportsman.net>